

L-7006 S2 SRC

Non-Slip Work Shoes

Low Cut Lace-Up Work Shoes is made with Black Cow Leather and Rubber Outsole with Stitched Nylon Thread. It is designed as EN ISO 20345:2011 Quality with S2 category.



Upper : Water Resistant Black Cow Leather

Lining : Breathable Sandwich Air Mesh

Insole : Comfortable EVA Coated Mesh

Outsole : Rubber Cement Sole (Non-Slip)

Toecap : Steel Toecap

Size : EU 37-47#, UK 3-13#, US4-14#

CE EN ISO 20345:2011 SBP SRC/HRO

Application : Industry, Logistics, Food Industry, Restaurant Chef, Kitchen Workers, Clearance & Cleanroom etc



200 JOULE
TOECAP



SLIP-
RESISTANT



SHOCK
ABSORPTION



ELECTRIC
HAZARD 18KV



PETROL AND
CHEMICAL
RESISTANT



WATER
RESISTANT

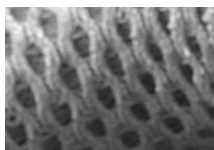


OIL
RESISTANT



Steel Toecap Protection • AN1-EN12568

Stainless steel toe cap can reach 200 joules from falling or rolling objects. It is stronger than iron toe cap.



Breathable Sandwich Air Mesh • CE EN ISO 20344:2011

Airhole design sandwich mesh lining is breathable & abrasion resistant. It can keep user's feet dry all days. The abrasion resistant can reach more than 51200 cycles at dry test. Meanwhile, the mesh tear strength is more than 15 newtons.



Water Resistant Cow Leather Upper • CE EN ISO 20345:2011

High quality cow embossed leather with thickness 1.6-1.8mm. It is treated with water resistant coating to protect feet from raining workday. Tear strength is required 10% higher than Europe test requirement, to reach longer lifespan.

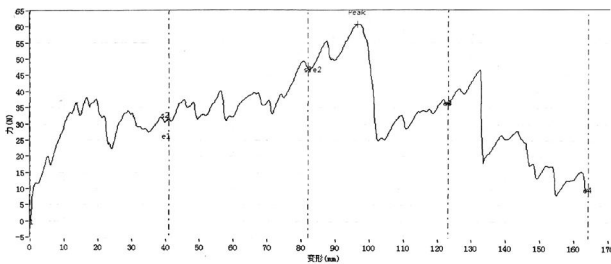


Slip Resistant Rubber Outsole • CE EN ISO 20345:2011

The outsole is made with natural rubber plus 10-15% nitrile. The sides are stitched with kevlar thread, to enhance bond strength between upper & outsole. The rubber can pass SRC slip-resistant test.

Sole Bonding Strength Test

- EN ISO 20344:2011, 5.2 (Between Upper & Sole)
- Average Test Result 5.8 ± 5 (N/mm)



Upper, Lining & Bonding Strength Test Result

Leather Tear Strength \geq	120.0 Newtons
Leather Tensile Properties \geq	15.0 N/mm ²
Lining Tear Strength \geq	15.0 N/mm
Bonding Strength \geq	4.0 N/mm

✓ Protection With Slip Resistant (SRC)		Result
Test Requirement : SRA (Eurotile 2+Nal S) Forward Heel Slip ≥ 0.28 & Forward Flat Slip: ≥ 0.32 SRB (Steel Floor+Glycerine) Forward Heel Slip ≥ 0.13 & Forward Flat Slip: ≥ 0.18		PASS
Standards : EN ISO 20344:2011(5.11) , SRC Means both SRA & SRB requirements are fulfilled.		
✓ Protection Against Electric Hazard (EH 18KV)		Result
Test Requirement : Test Voltage 18KV, Test Period 1 Minute, Leakage Current $\leq 1.0\text{mA}$		PASS
Standards : ASTM F2412-18a, Clause 9		
✓ Protection Resistant to Fuel Oil		Result
Test Requirement : Change in Volume and Change in Hardness (Outsole) is No More Than +12%(*)		PASS
Standards : EN ISO 20344:2011(8.6.1)		
SAFETOE Standard Package Instruction (Average 42# for Reference)		
Shoes Weight : 1.0-1.1 KGS /Pair		Carton Weight : 11-12 KGS /Carton
1 Pair / Color Box , Dimensions : 32×21×12CM		10 Pair / Carton , Dimensions : 62×43×33CM



User Instructions:

- 1.) RECOMMENDED TO USE : Industry, Logistics, Food Industry, Restaurant Chef, Kitchen Workers, Clearance & Cleanroom etc
- 2.) LIMITATION TO USE: It is very important that footwear selected must be suitable for the right workplaces. The protection against risks or hazards which are not mentioned in this document is not warranted.
- 3.) FITTING & SIZE: All footwear are marked with standard size on tongue label. Some are with different size comparison, such as EU size, UK size, US size etc. Please wear footwear in a suitable size.

Footwear which are too loose or too tight may not provide optimum level of protection.

- 4.) STORAGE: Keep the footwear in its original packaging, under ordinary temperature, non-humidity conditions and in clean, covered and ventilated premises.
- 5.) CLEANING: Clean footwear regularly by high quality cleaning treatments recommended as suitable for the purpose. Don't use caustic or corrosive cleaning agents.